

# Orientalmotor

## General Catalog 2015/2016

### A Stepper Motors

#### Stepper Motor and Driver Packages, AC Input

0.36°/Geared  $\alpha$ STEP

0.72°/Geared

#### Stepper Motor and Driver Packages, DC Input

0.36°/Geared  $\alpha$ STEP

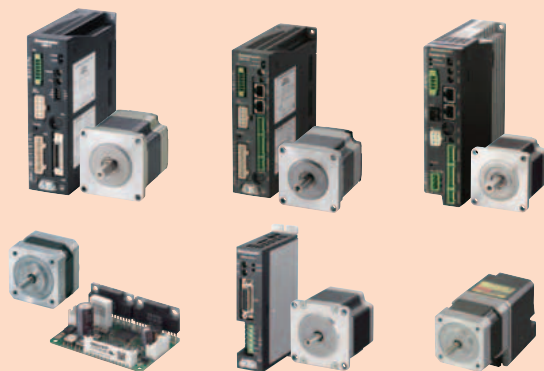
0.72°/0.36°/Geared

1.8°/0.9°/Geared

#### Stepper Motors (Motor Only)

1.8°/0.9°/Geared

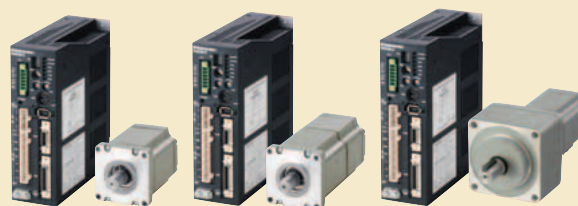
0.72°/0.36°



### B Servo Motors

#### AC Servo motor and Driver Package

AC Input

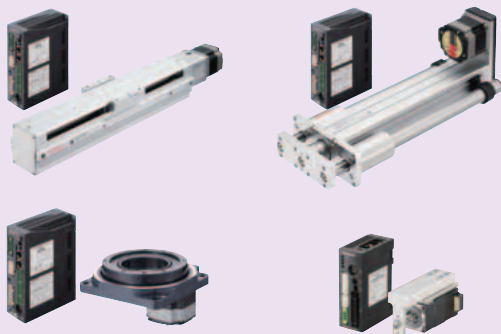


### E Linear & Rotary Actuators

#### Electric Linear Slides

#### Electric Cylinders

#### Hollow Rotary Actuators



### F Network-Compatible Products, Controller

#### Network-Compatible Products

Modbus-Compatible

EtherCAT-Compatible

CC-Link-Compatible

MECHATROLINK-Compatible

Network Converters

#### Controller



## C Standard AC Motors

### ■ Constant Speed Motors

Three-Phase Induction Motors/Single-Phase Induction Motors/  
Reversible Motors/Electromagnetic Brake Motors/  
Clutch & Brake Motors/Low-Speed Synchronous Motors

### ■ Torque Motors

### ■ Watertight, Dust-Resistant Motors

### ■ Right-Angle Gearheads

### ■ Linear Heads

### ■ Brake Pack



## D Brushless Motors/AC Speed Control Motors

### ■ Brushless Motors

AC Input/DC Input

### ■ AC Speed Control Motors

AC Input



## G Cooling Fans

### ■ Axial Flow Fans

AC Input/DC Input

### ■ Centrifugal Blowers

AC Input/DC Input

### ■ Cross Flow Fans

AC Input/DC Input

### ■ Enclosure Fan Modules

AC Input/DC Input

### ■ Thermostat



# Contents

	Page
Contents	2
Before Selecting a Product	5
Symbols	7
How to Use This Catalog and the Website	8

	Page
The Products and Services Delivered by Oriental Motor	10
Selection Guide	
By Operating Function	15
By Basic Characteristics	18

## A Stepper Motors

	Page
<b>Overview, Product Series</b>	
Product Series	A-2
Overview	A-7
How to Read Specifications	A-14
How to Read Speed – Torque Characteristics	A-15
Common Specifications	A-16
<b>AC Input Stepper Motor and Driver Packages</b>	A-19
0.36°/Geared <b>αSTEP</b> <b>AR</b> Series	A-20
0.36°/Geared <b>αSTEP</b> Absolute <b>AZ</b> Series	A-74
0.72°/Geared <b>RKII</b> Series	A-84
<b>DC Input Stepper Motor and Driver Packages</b>	A-135
0.36°/Geared <b>αSTEP</b> <b>AR</b> Series	A-136
0.36°/Geared <b>αSTEP</b> Absolute <b>AZ</b> Series	A-196
0.72°/0.36°/Geared <b>CRK</b> Series	A-206
1.8°/Geared <b>RBK</b> Series	A-214
1.8°/0.9°/Geared <b>CMK</b> Series	A-220
0.72° All-in-One <b>PKA</b> Series	A-226
<b>Motor Only</b>	A-233
1.8°/0.9° <b>PKP</b> Series/ <b>PK</b> Series	A-234
Geared <b>PKP</b> Series	A-256
0.72°/0.36° <b>PKP</b> Series	A-266
<b>Accessories</b>	A-269

## B Servo Motors

	Page
<b>Overview, Product Series</b>	
Overview	B-2
How to Read Specifications	B-7
How to Read Speed – Torque Characteristics	B-8
<b>Tuning-Free Servo Motor and Driver Package NX Series</b>	B-10

## C Standard AC Motors

	Page
<b>Overview, Product Series</b>	
Product Series	C-2
Overview	C-3
<b>Constant Speed Motors</b>	C-9
Features and Types	C-10
How to Read Specifications	C-12
Common Specifications	C-17
<b>Three-Phase Induction Motors</b>	C-21
Features and Types	C-22
General Specifications	C-30
60 W, 100 W ( <b>KII</b> Series)	C-32
6~200 W (World <b>K</b> Series, <b>BH</b> Series)	C-58
<b>Single-Phase Induction Motors</b>	C-113
Features and Types	C-114
General Specifications	C-119
6~200 W ( <b>KII</b> Series, World <b>K</b> Series, <b>BH</b> Series)	C-120
40~150 W, 2-Pole High-Speed Type (World <b>K</b> Series)	C-142
<b>Reversible Motors</b>	C-147
<b>Electromagnetic Brake Motors</b>	C-155
<b>Clutch &amp; Brake Motors</b>	C-163
<b>Low-Speed Synchronous Motors</b>	C-167
<b>Torque Motors</b>	C-171
<b>Watertight, Dust-Resistant Motors</b>	C-177
<b>Right-Angle Gearheads</b>	C-181
<b>Linear Heads</b>	C-185
<b>Brake Pack</b>	C-191
<b>Accessories</b>	C-195
<b>Installation</b>	C-209

## D Brushless Motors/AC Speed Control Motors

	Page
<b>Overview, Product Series</b>	
Product Series	D-2
Overview	D-5
<b>Brushless Motors</b>	
Features and Types	D-11
How to Read Specifications	D-12
How to Read Specifications	D-15
<b>AC Input</b>	
<b>BMU</b> Series	D-18
<b>BLE</b> Series	D-42
<b>BLF</b> Series	D-82
<b>BXII</b> Series	D-86
<b>DC Input</b>	
<b>BLH</b> Series	D-118
<b>AC Speed Control Motors</b>	
Types	D-135
How to Read Specifications	D-136
How to Read Specifications	D-137
<b>DSC</b> Series	D-138
<b>BHF</b> Series	D-176
<b>Accessories</b>	
	D-179
<b>Installation</b>	
	D-191

## E Linear & Rotary Actuators

	Page
<b>Overview, Product Series</b>	
Overview	E-2
Types and Applications	E-4
Selection of Electric Linear Slides	E-6
Selection of Electric Cylinders	E-8
Selection of Hollow Rotary Actuators	E-12
Drivers for Linear & Rotary Actuators	E-14
<b>Electric Linear Slides</b>	
<b>EAS</b> Series <i>αSTEP AR</i> Equipped	E-16
<b>Electric Cylinders</b>	
<b>EAC</b> Series <i>αSTEP AR</i> Equipped	E-56
<b>DRLII</b> Series	E-108
<b>Hollow Rotary Actuators</b>	
<b>DGII</b> Series <i>αSTEP AR</i> Equipped	E-118
<b>Accessories</b>	
	E-139

## F Network-Compatible Products, Controller

	Page
<b>Network-Compatible Products</b>	
Overview	F-2
Modbus (RTU)-Compatible Product	F-6
EtherCAT-Compatible Product CC-Link-Compatible Product MECHATROLINK-Compatible Product	F-7
Network Converters	F-8
<b>Controller</b>	
Overview	F-10
<b>SCX11</b>	F-12

## G Cooling Fans

	Page
<b>Overview, Product Series</b>	
Product Series	G-2
Overview	G-4
Maximum Air Flow and Maximum Static Pressure	G-10
How to Read Specifications	G-13
Alarm Specifications	G-14
<b>Axial Flow Fans</b>	
	G-17
<b>AC Input</b>	
Low-Power Consumption <b>EMU</b> Series	G-22
Compact Size <b>MU</b> Series	G-26
Large Size, Large Air Flow <b>MRS</b> Series	G-36
Long-Life <b>MRE</b> Series	G-52
<b>DC Input</b>	
<b>MDS</b> Series, <b>MD</b> Series	G-56
Low Speed Alarm <b>MDA</b> Series	G-76
Variable Flow <b>MDV</b> Series	G-80
Long-Life <b>MDE</b> Series	G-82
Splash Proof <b>MDP</b> Series	G-84
<b>Centrifugal Blowers</b>	
	G-87
<b>Cross Flow Fans</b>	
	G-91
<b>Enclosure Fan Modules</b>	
	G-95
<b>Thermostat</b>	
	G-103
<b>Accessories</b>	
	G-107
<b>Installation</b>	
	G-115

## H Technical Reference

	Page
<b>Selection Calculations</b>	
Motors	H-2
Linear & Rotary Actuators	H-18
Cooling Fans	H-29
<b>Service Life</b>	
Stepper Motors	H-34
Servo Motors	H-42
Standard AC Motors	H-44
Brushless Motors/AC Speed Control Motors	H-47
Gearheads	H-49
Cooling Fans	H-56

## I General Information

	Page
Global Regulations & Standards	I-2
ISO 9001, ISO 14001	I-11
Corporate Overview	I-12
Global Sales Network	I-14
How to Use Web Sizing Tool	I-18
Conversion Charts	I-19
Product Line Updates	I-20
Product Index	I-26