

Network Converters



- For detailed information about regulations and standards, please see the Oriental Motor website.



Network converters convert host communication protocol to Modbus (RTU) communication protocol. Use a network converter to control Oriental Motor's RS-485 communication-compatible products within the host communication environment.

Network-
Compatible
Products
Overview

Modbus
(RTU)

EtherCAT

Network
Converters

Controller
Overview

SCX11



See Full Product Details Online
www.orientalmotor.com

- Manual
- Specifications
- Dimensions
- CAD
- Characteristics
- Connection and Operation

Features

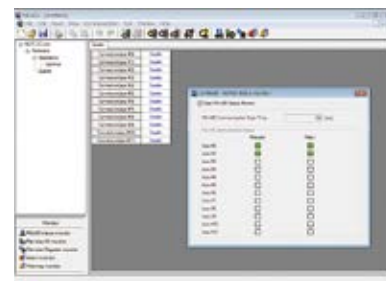
Reduced Wiring and Space Saving is Possible

For connection to RS-485 communication-compatible products, wiring adjustments can be done with a single included cable. Connection is also possible with a commercial LAN cable (straight wiring).



Setting Method for Various Parameters

A control module **OPX-2A** (sold separately) or support software **MEXE02** is required for setting a network converter. A control module **OPX-2A** and support software **MEXE02** can also be used to monitor the time it takes to communicate with each axis.



Support Software **MEXE02**

Multi-Axis Connection is Possible

Multi-axis connection is possible for RS-485 communication-compatible products.

- CC-Link-Compatible: 12 axes max.
- MECHATROLINK-II-Compatible: 16 axes max.
- EtherCAT-Compatible: 16 axes max.

Product Line

Network Type	Product Name	List Price
CC-Link-Compatible	NETC01-CC	\$282.00
MECHATROLINK-II-Compatible	NETC01-M2	\$358.00
EtherCAT-Compatible	NETC01-ECT	\$245.00

The following items are included with each product.

Network Converter, RS-485 Communication Cable, Power Connector, Operating Manual, CC-Link Communication Connector (**NETC01-CC** only)

Note

- A control module **OPX-2A** or support software **MEXE02** is required for setting **NETC01-M2**
- The support software **MEXE02** can be downloaded from the website. Visit our website, or contact the nearest Oriental Motor sales office.
<http://www.orientalmotor.com/>

● ESI File

An ESI file is arranged so that **NETC01-ECT** can be used more easily. The ESI file can be downloaded from our website.

