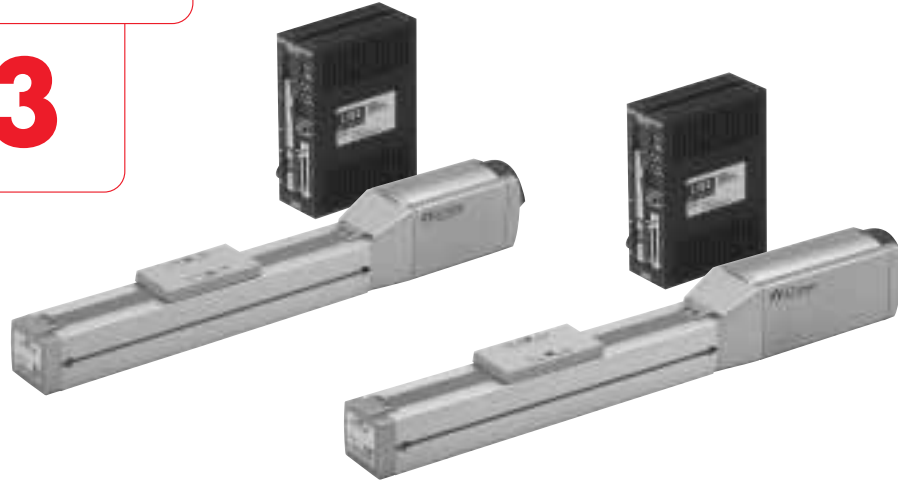


EZS Series

EZS3



Specifications

Model	Incremental Type		EZS3-□CI		EZS3-□MCI			
	Absolute Type		EZS3-□CA		EZS3-□MCA			
Motor Type	Stepping Motor with Encoder							
Drive Method	Ball Screw							
Electromagnetic Brake	Not equipped				Equipped			
Speed Range	mm/s		~300		~300			
Max. Transportable Mass	kg	Horizontal Direction	5		5			
		Vertical Direction	—		2			
Max. Acceleration	m/s ²	Horizontal Direction	2		2			
		Vertical Direction	—		2			
Max. Thrust Force	N kgf		23	2.3	23	2.3		
			23	2.3	23	2.3		
Max. Holding Brake Force	N kgf	Power ON	23		23			
		Power OFF	—		—			
		Electromagnetic Brake	—		23			
Repetitive Positioning Accuracy	mm		±0.02					
Resolution	mm		0.015					
Lead	mm		12					
Stroke	mm		50, 100, 150, 200, 250, 300, 400, 500					
Mass of Linear Slide	Figure in the parentheses shows the mass of the model with electromagnetic brake.		kg	Stroke	50 : 1.5 (1.7)	100 : 1.6 (1.8)	150 : 1.7 (1.9)	200 : 1.8 (2.0)
					250 : 1.9 (2.1)	300 : 2.0 (2.2)	400 : 2.2 (2.4)	500 : 2.4 (2.6)
Ambient Temperature	°C		0~+40 (Nonfreezing)					

● See page 52 for the specification and dimensions of the controller.

General Specifications

Item	Specification
Insulation Resistance	100 MΩ minimum when measured by a DC 500 V megger between the following places. <ul style="list-style-type: none"> • Windings — Case • Case — Windings of electromagnetic brake (Only for electromagnetic brake equipped model)
Dielectric Strength	Sufficient to withstand the following for one minute. <ul style="list-style-type: none"> • Windings — Case AC 0.5 kV 50 Hz • Case — Windings of electromagnetic brake AC 0.5 kV 50 Hz (Only for electromagnetic brake equipped model)

Linear Slide/Controller Combinations

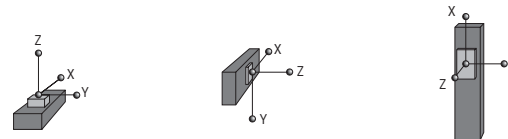
Type	Electromagnetic Brake	Model	Linear Slide Model	Controller Model
Incremental Type	Not equipped	EZS3-□CI	EZS3-□	EZMC36I
	Equipped	EZS3-□MCI	EZS3-□M	
Absolute Type	Not equipped	EZS3-□CA	EZS3-□	EZMC36A
	Equipped	EZS3-□MCA	EZS3-□M	

*The box (□) in the model name and linear slide model name represents the code for stroke length.

Allowable Overhung Length (mm)

* The length from the center of load's mounting surface to the center of gravity of the object being carried.

- Horizontal Installation
- Wall Mount Installation
- Vertical Installation



Carried Weight	X	Y	Z	Carried Weight	X	Y	Z	Carried Weight	X	Y	Z
1kg	205	300	300	1kg	155	300	300	0.5kg	300	257	300
2.5kg	75	136	300	2.5kg	62	300	105	1kg	142	129	142
5kg	32	58	157	5kg	22	106	31	2kg	62	62	52

The values shown in the tables are for uni-axial loading. For multi-axis loading please contact an Oriental Motor representative for assistance.

