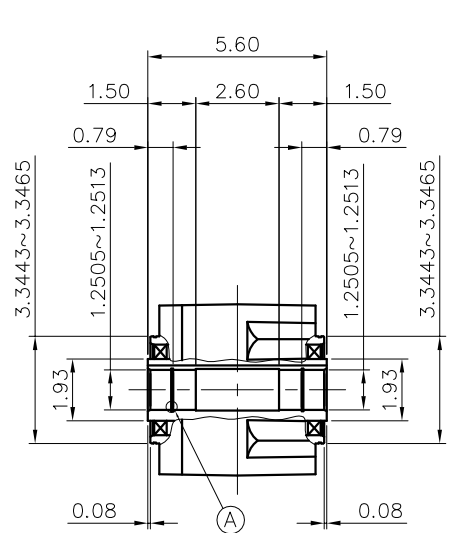
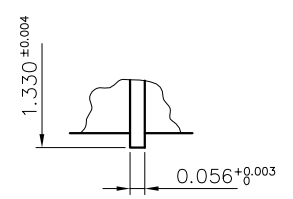


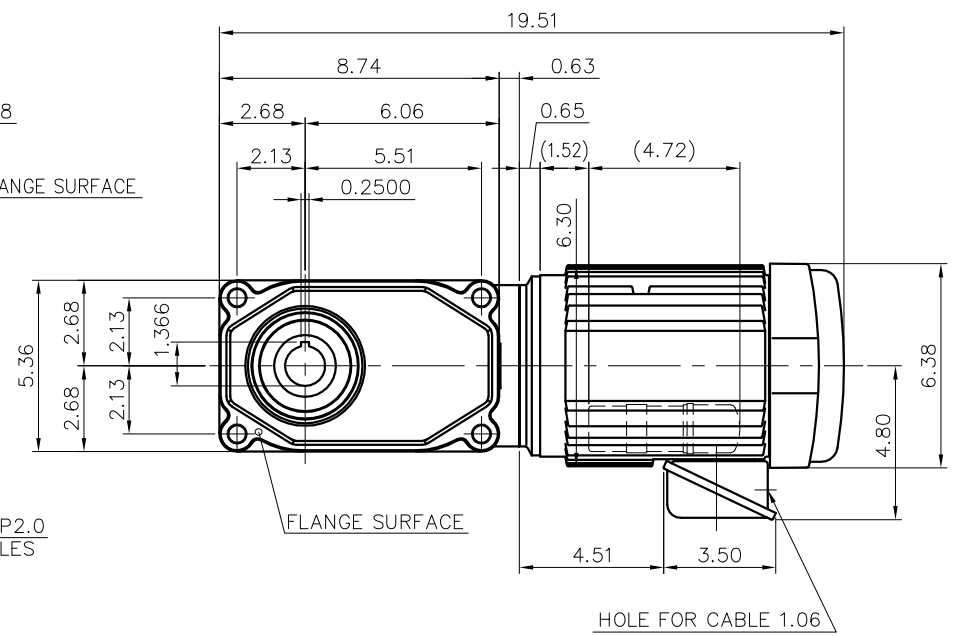
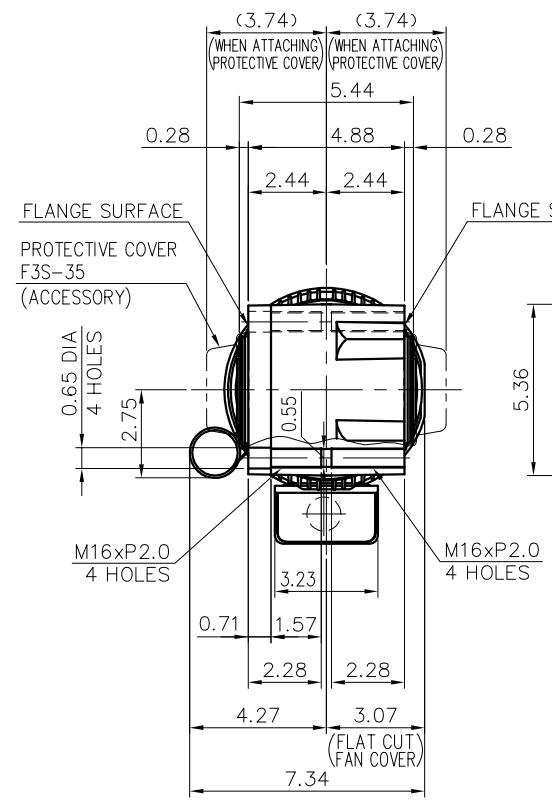
REVISIONS



DETAIL OF OUTPUT SHAFT



DETAIL OF : A



MOTOR SPECIFICATION

TYPE	1-PHASE INDUCTION MOTOR
FORM	TOTALLY ENCLOSED FAN COOLED TECA13
OUT PUT	1/2 HP
VOLTAGE	230 V
FREQ	50/60 Hz
POLES	4
RATING	S1 CONT.

REDUCER SPECIFICATION

TYPE	GTR
FORM	35
RATIO	1/80 1/100 1/120 1/160 1/200 1/240
LUBRICATION	GREASE

NOTE: THIS MOTOR IS AFFIXED WITH CE MARKING.  
 NOTE: BE SURE TO USE THE THERMAL RELAY WITH CE MARKING.  
 NOTE: THE GROUND LEAD SHOULD BE LONGER THAN THE SUPPLY LEAD FOR THE MOTOR.  
 NOTE: INSULATION : CLASS A (UL) B (EN)  
 NOTE: THIS MOTOR IS UL CERTIFIED MODEL. (UL1004-1)  
 NOTE: UL-LISTED MODEL NAME: BML6S

TITLE F3S35N080~240-BML6S DIMENSION OF MODEL					
DRAWING NO. F3S35N-BML6S					
USER					
NOTICE					
APPROVE	Y.Ikeda	SCALE		UNIT	DATE
CHECK	I.Takashima	1/6		in	2014.12.05
DESIGN	T.Fujimoto	NISSEI CORPORATION			