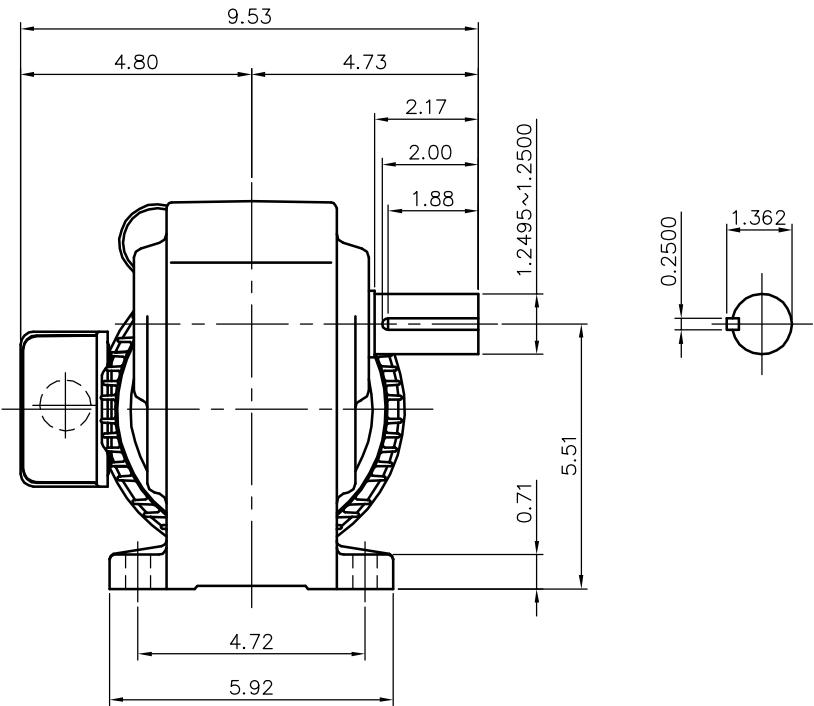
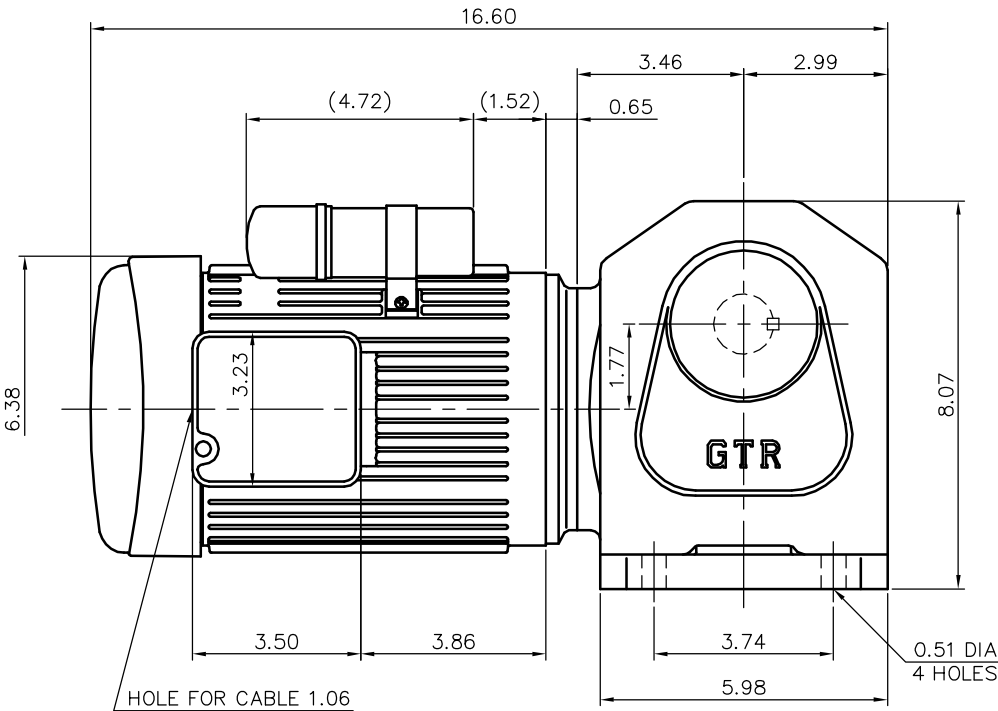



REVISIONS
-----------



MOTOR SPECIFICATION	
TYPE	1-PHASE INDUCTION MOTOR
FORM	TOTALLY ENCLOSED FAN COOLED TECA13
OUT PUT	1/2 HP
VOLTAGE	115 V
FREQ	50/60 Hz
POLES	4
RATING	CONT.

REDUCER SPECIFICATION	
TYPE	GTR
FORM	32L
RATIO	1/80 1/100 1/120 1/160 1/200 1/240
LUBRICATION	GREASE

NOTE: THIS MOTOR IS AFFIXED WITH CE MARKING.  
 NOTE: BE SURE TO USE THE THERMAL RELAY WITH CE MARKING.  
 NOTE: THE GROUND LEAD SHOULD BE LONGER THAN THE SUPPLY LEAD FOR THE MOTOR.  
 NOTE: INSULATION : CLASS A  
 NOTE: THIS MOTOR IS UL CERTIFIED MODEL.(UL1004)  
 NOTE: UL-LISTED MODEL NAME: BML1S

TITLE						H2L32L080~240-BML1S					
						DIMENSION OF MODEL					
DRAWING NO. H2L32L-BML1S											
USER											
NOTICE											
APPROVE		K.Nagasaka		SCALE				UNIT		DATE	
CHECK		Y.Shiina		1/4				in		2008.02.15	
DESIGN		M.Yoshida									
NISSEI CORPORATION											