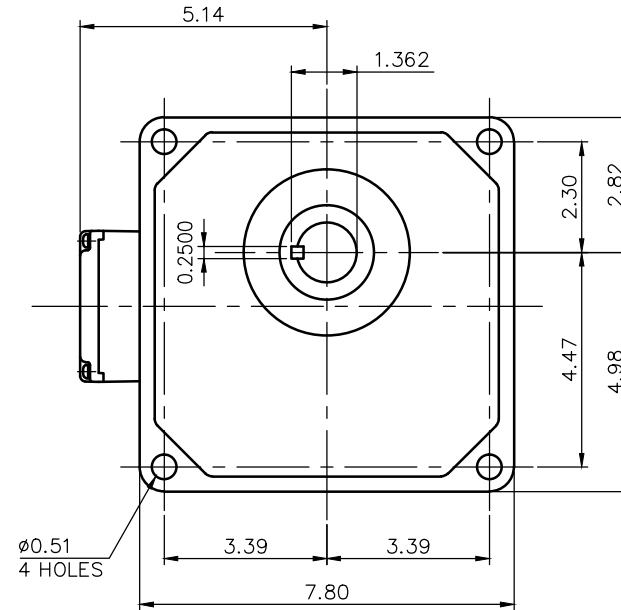
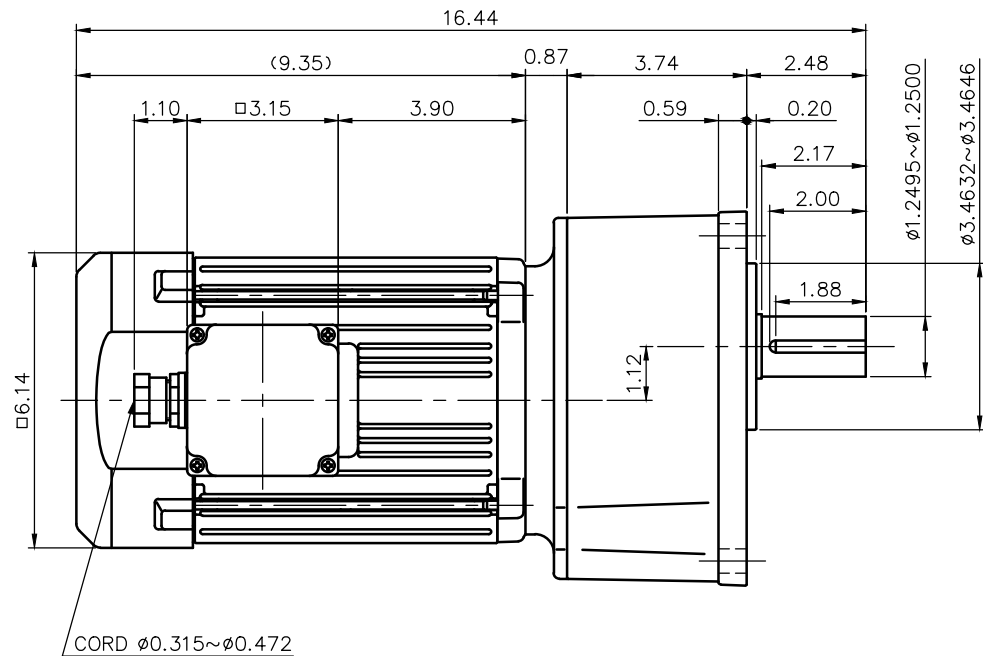


REVISIONS



NOTE: THE BRAKE LEADS ARE PULLED INTO THE TERMINAL BOX.  
 NOTE: THE ATTACHED RECTIFIER IS USED FOR DC POWER SUPPLY TO THE BRAKE COIL.

NOTE: THIS MOTOR IS AFFIXED WITH CE MARKING.  
 NOTE: THE GROUND LEAD SHOULD BE LONGER THAN THE SUPPLY LEAD FOR THE MOTOR.  
 NOTE: THIS MOTOR IS UL CERTIFIED MODEL. (UL1004-1)  
 NOTE: UL-LISTED MODEL NAME: MV6AEB2

BRAKE SPECIFICATION

|                   |                 |
|-------------------|-----------------|
| TYPE              | BS3-08          |
| BRAKE TYPE        | SPRING CLOSE    |
| INPUT VOLTAGE     | DC 104V         |
| POWER CONSUMPTION | 33 W (at 75 °C) |
| BRAKE TORQUE      | 52.0 in-lbs     |

MOTOR SPECIFICATION

|                      |                                |
|----------------------|--------------------------------|
| TYPE                 | 3-PHASE INDUCTION MOTOR        |
| FORM                 | TOTALLY ENCLOSED FAN COOLED P6 |
| OUT PUT              | 1 HP                           |
| VOLTAGE              | 208/230/460/400 V              |
| FREQ.                | 60/60/60/50 Hz                 |
| POLES                | 4                              |
| ROTATIONAL FREQUENCY | 1800/1800/1800/1500 rpm        |
| EFFICIENCY CLASS     | IE3 EN60034-30 Standard        |
| RATING               | S1 CONT.                       |
| INS.CLASS            | F                              |

REDUCER SPECIFICATION

|             |                     |
|-------------|---------------------|
| TYPE        | GTR                 |
| FORM        | 32                  |
| RATIO       | 1/30 1/40 1/50 1/60 |
| LUBRICATION | GREASE              |

TITLE G3K32N30~80-MV6AEB2  
 DIMENSION OF MODEL

DRAWING NO. G3K32N-MV6AEB2

USER

NOTICE

|         |          |       |     |  |                    |            |
|---------|----------|-------|-----|--|--------------------|------------|
| APPROVE | Y.Ikeda  | SCALE | 1/4 |  | UNIT               | DATE       |
| CHECK   | M.Iijima |       |     |  | in                 | 2015.05.01 |
| DESIGN  | Y.Miura  |       |     |  | NISSEI CORPORATION |            |