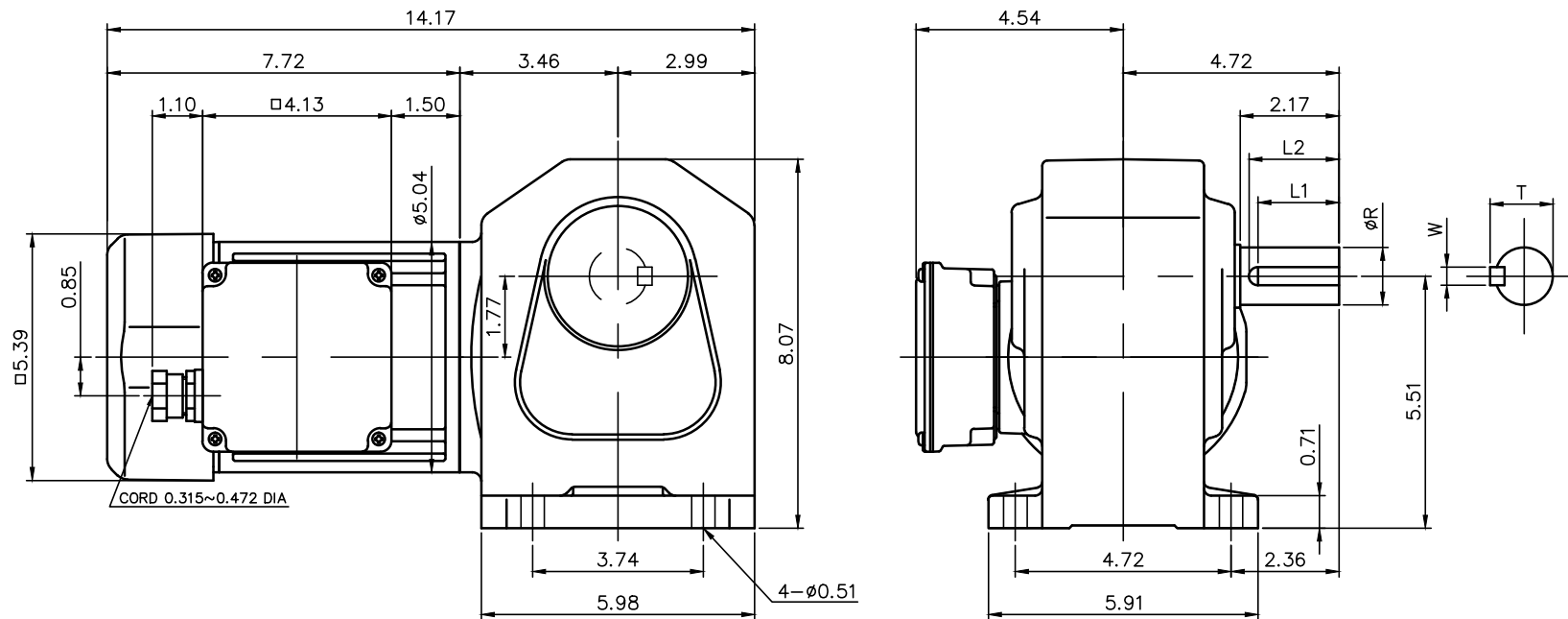


REVISIONS



| モータ仕様 MOTOR SPECIFICATION | |
|---------------------------|--|
| 名称 TYPE | 三相誘導電動機 THREE PHASE INDUCTION MOTOR |
| 冷却方式 COOLING METHOD | 全閉外扇形 TOTALLY ENCLOSED FAN COOLED |
| 出力 MOTOR POWER | 1/2 HP (0.4 kW) |
| 定格 RATING | S1 CONT. |
| 耐熱劣化 INS. CLASS | F |
| 保護構造 IP RATING | IP44 |

| モータ仕様 MOTOR SPECIFICATION | | | | | | |
|---------------------------|------------|---------------|---------------------|-------------------|--------------------------|----------------------------|
| ** | 電圧 VOLTAGE | 周波数 FREQUENCY | 回転速度 ROTATION SPEED | 電流値 CURRENT VALUE | 対応規格 COMPLIANT STANDARDS | 高効率認証 EFFICIENCY STANDARDS |
| AV | 208 V | 60 Hz | 1680 r/min | 1.8 A | UL/cUL/CE | - |
| | 230 V | 60 Hz | 1720 r/min | 1.8 A | | |
| | 460 V | 60 Hz | 1720 r/min | 0.9 A | | |
| | 400 V | 50 Hz | 1400 r/min | 1.0 A | | |
| EV | 415 V | 50 Hz | 1390 r/min | 0.96 A | | |
| | 440 V | 50 Hz | 1410 r/min | 0.95 A | | |
| | 480 V | 60 Hz | 1680 r/min | 0.82 A | | |

| 減速機仕様 REDUCER SPECIFICATION | | |
|-----------------------------|--|--|
| 名称 TYPE | GTR | |
| 枠番 FRAME NO. | 32 | |
| 減速比 RATIO | 80 100 120 160 200 240 | |
| 潤滑 LUBRICATION | グリース GREASE | |
| 塗装 PAINT COLOR | グレー (マンセル値 9B6/0.5) GREY (MANSEL CODE: 9B6/0.5) | |

| 出力軸仕様 OUTPUT SHAFT SPECIFICATION | | | | | | | |
|----------------------------------|--------------------|--------------------|-----------------------------|------------------|------------------|-------------------|--------------------|
| FRAME NO | R | STANDARD /OPTION | DIAMETER TOLERANCE | L1 | L2 | T | W |
| 32 | 1.2500 in 32 mm | STANDARD OPTION | +0.0/-0.0005 +0.0/-0.016 | 1.88 in 45 mm | 2.00 in 50 mm | 1.362 in 35 mm | 0.2500 in 10 mm |

| 電磁ブレーキ仕様 BRAKE SPECIFICATION | |
|--------------------------------|--|
| 型式 MODEL | O40_B4 |
| 方式 BRAKE TYPE | 無励磁作動形 (スプリングクローズ) POWER-OFF (SPRING CLOSE) |
| 励磁電圧 INPUT VOLTAGE | DC180V |
| 容量 POWER CONSUMPTION | 14W (AT 75°C) |
| 静摩擦トルク STATIC FRICTION TORQUE | 34.70 in-lb |
| 動摩擦トルク DYNAMIC FRICTION TORQUE | 27.79 in-lb |

- 製品型式「□□□」は減速比によって入る文字数が変わります。
Number of characters on product model「□□□」, varies depending on the reduction ratio.
- 製品型式「**」には「AV」「EV」が入ります。
Replace product model「**」 with 「AV」「EV」.

| | | | | | |
|-------------|---|--------------------|-----|------|------------|
| TITLE | H2L32L□□□-MB04T* *EB4 外形寸法図 DIMENSION OF MODEL | | | | |
| DRAWING NO. | H2L32L-MB04TEB4 | | | | |
| USER | | | | | |
| NOTICE | | | | | |
| APPROVE | H.Hayashi | SCALE | 1:4 | UNIT | in |
| CHECK | M.Iijima | | | DATE | 2020.03.31 |
| DESIGN | A.Kobayashi | NISSEI CORPORATION | | | |