

2 Operating a motor

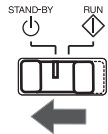
1 AC power ON

Set the operation switch to

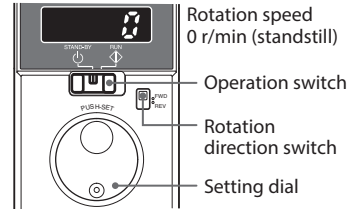
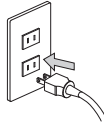
[STAND-BY]

Power ON

The display blinks



The figure is an example for when the product is of a single-phase 100 VAC.



Rotation speed
0 r/min (standstill)

Operation switch

Rotation
direction switch

Setting dial

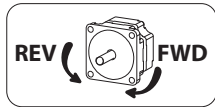
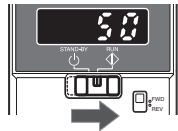
If the power supply is turned on while the operation switch is set to the [RUN] side, the alarm **8L48** is generated.

[How to reset] Set the operation switch to [STAND-BY]. The alarm is reset, and the motor rotation speed is displayed.

2 Start of motor

[RUN]

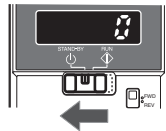
The motor rotates.
50 r/min (factory setting)



Switch the motor rotation direction using the rotation direction switch.

To stop the motor

[STAND-BY]



The motor stops.

3 Change of motor speed [Example: 50 → 1000 r/min]

Adjustment



Decelerate Accelerate

When the setting dial is turned, the display blinks. You can change the speed while blinking.

Set



Press

When the setting dial is pressed, the display changes to lighting from blinking, and the speed will be set.

When you start the motor next time, it will rotate at the set speed.

Orientalmotor



HM-5191-3

Brushless Motor

BMU Series

QUICK START GUIDE

Thank you for purchasing an Oriental Motor product.

Use the product correctly after thoroughly reading the section "Safety precautions" of the operating manual.

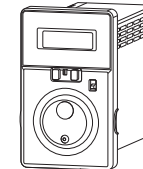
This document describes methods till rotating the motor after connecting it to the driver.

For details about how to use the product, refer to the **OPERATING MANUAL** supplied with the driver.

Package contents

The package includes the items shown below.

☐ Driver



The figure shows the 30 W to 120 W driver.

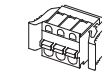
☐ QUICK START GUIDE (this document)

☐ OPERATING MANUAL

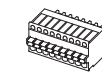
☐ Connector

• 30 W to 120 W

CN1 : 3 pin

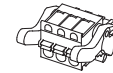


CN4 : 9 pin

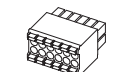


• 200 W to 400 W

CN1 : 3 pin

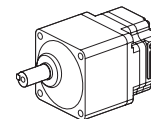


CN4 : 12 pin



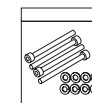
Motor (sold separately)

☐ Motor



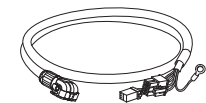
The figure shows an example of the combination type.

☐ Mounting screw set



Supplied with the combination type.

Connection cable (sold separately)

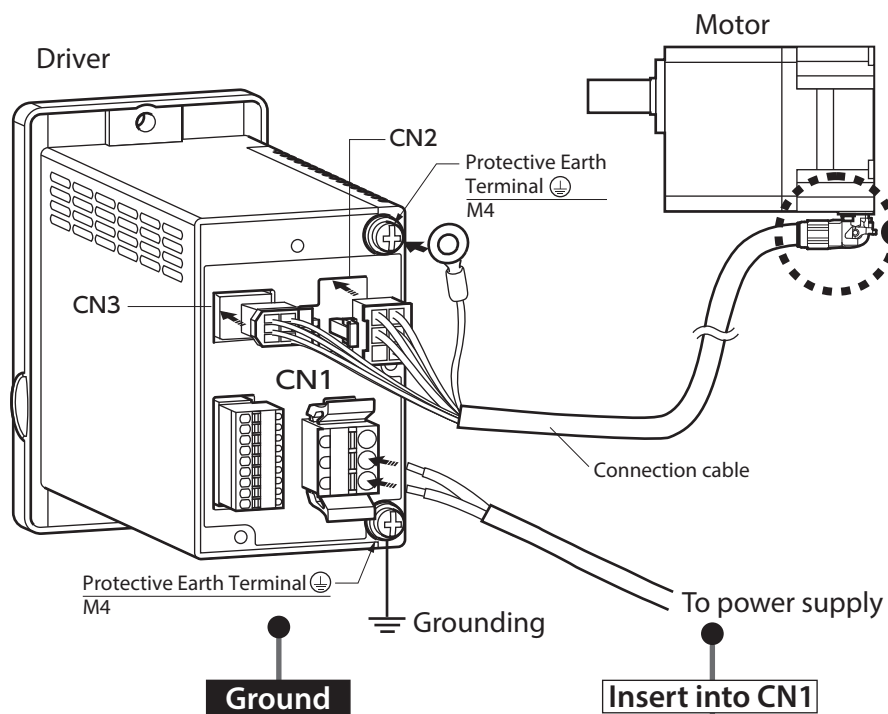


To connect the motor and driver, the dedicated connection cable is always needed.

☐ OPERATING MANUAL

* Be sure to match the motor output power with the driver output power.

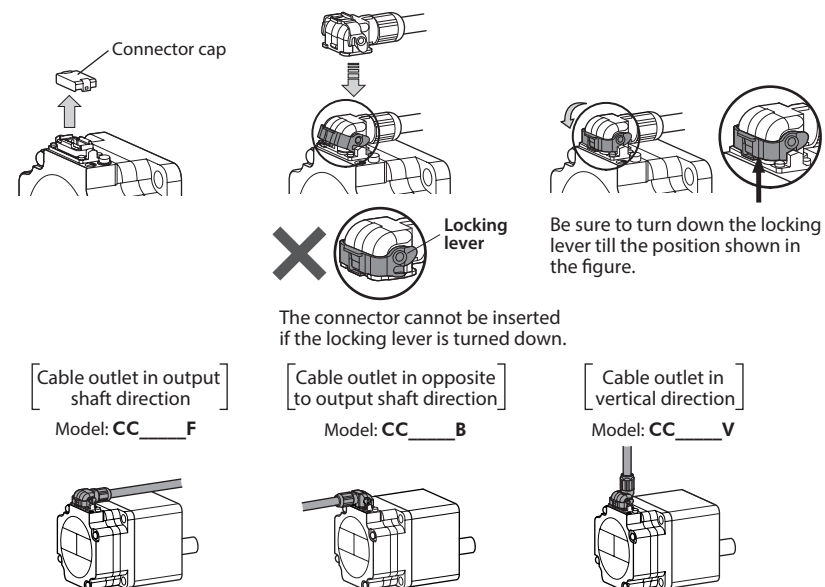
1 Connecting



Connection for motor and cable

This is an example for when the cable is "leading in direction of output shaft."

- 1 Remove
- 2 Attach
- 3 Secure



Be sure to ground using the Protective Earth Terminal.

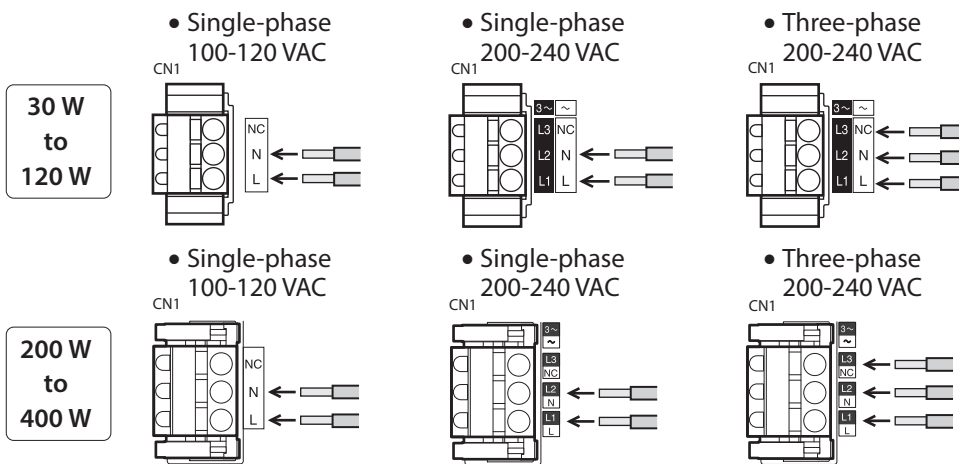


Prepare a grounding wire since it is not supplied with the product.
AWG18~14 (0.75~2.0 mm²)

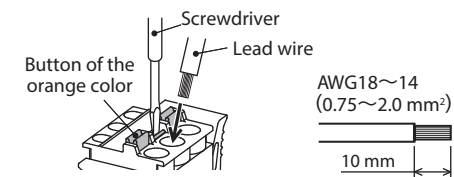
Note

Be sure to ground the product. Failure to do so may result in electric shock or damage to the product. Static electricity may cause damage to the product if the Protective Earth Terminals are not grounded.

Connect a power supply cable according to the power-supply voltage specifications of the driver. Prepare the power supply cable since it is not supplied with the product.



The 400 W type is indicated L1, L2, and L3 only.



Insert the lead wire while pushing the button of the orange color with a screwdriver.

Note

Insert the lead wire to the connector so that the tip part (copper wires after stripping the insulation cover) does not become loose. The loose tip part (copper wires) may cause short-circuiting, leading to damage to the product.

